

To all bidders furnishing all labor and materials necessary and required for constructing the above referenced project. This Addendum has been prepared to clarify, modify, delete, or add to the original or previously modified Contract Documents for the above referenced project. Revisions to items listed here shall supersede description thereof prior to above date. All conditions not specifically referenced here shall remain the same. It is the obligation of the General Contractor to make subcontractors aware of any items herein that may affect submitted bids.

Acknowledge receipt of all Addenda by inserting the addendum number and date in the space provided on the Bid Form. Failure to do so may subject Bidder to disqualification. All addenda items refer to the Specifications and Drawings unless specifically noted otherwise.

### **BIDDING AND CONTRACT REQUIREMENTS**

**AD01.01** Pre-Bid Conference and Site Visit Sign-in Sheet and Agenda are provided herein for reference – See Attachments.

### **DRAWINGS AND SPECIFICATIONS**

**AD01.02** Sheet T0 – TITLE SHEET

- Revise SHEET INDEX to add missing reference to sheet A5 - DETAILS.
- Revise SHEET INDEX to add new RMI/Airdyne reference drawing.
- Revise PROJECT TEAM to add Owner's Representative, Capital Program Management.

**AD01.03** Sheet A3 – DEMOLITION PLAN

- Add sheet in its entirety. Sheet was missing from initial bid package - See attached.

**AD01.04** SHEET X1 – COOLER/FREEZER COMBO DETAILS

- Replace existing sheet in its entirety with new sheet - See attached.
- Note - While this sheet is primarily for reference for RMI/Airdyne provided and installed equipment, some site development work is identified on this sheet.

**AD01.05** SHEET X2 – COOLER/FREEZER COMBO DETAILS

- New sheet added - See attached.
- Note - While this sheet is primarily for reference for RMI/Airdyne provided and installed equipment, some site development work is identified on this sheet.



**AD01.06 SHEET X3 – COLD STORAGE ROOM ACCESSORY DETAILS**

- New sheet added - See attached.
- Note - While this sheet is primarily for reference for RMI/Airayne provided and installed equipment, some site development work is identified on this sheet.

**AD01.07 SHEET R-1 – REFRIGERATION DETAILS**

- Replace existing sheet in its entirety with new sheet - See attached.
- Note - While sheet is primarily for reference for RMI/Airayne provided and installed equipment, some site development work is identified on this sheet.

**List of Attachments**

- Pre-Bid Conference and Site Visit Sign-in Sheet dated April 24, 2024 (2 pages)
- Pre-Bid Conference and Site Visit Agenda dated April 24, 2024 (1 page)
- Revised Sheet T0 - Title Sheet (1 page)
- Sheet A3 - Details (1 page)
- Revised Sheet X1 - Cooler/Freezer Combo Details (1 page)
- New Sheet X2 - Cooler/Freezer Combo Details (1 page)
- New Sheet X3 - Cold Storage Room Accessory Details (1 page)
- Revised Sheet R-1 - Refrigeration Details (1 page)

**End of Addendum No. 01**



Project No. 24-09  
CJUSD Central Freezer Facility

10:00 AM

RBH CONSTRUCTION INC	RICH HARTMAN	Folsom	916 835-8644	RBHCONSTRUCTION.NET
JPB Designs	Alex Olifuchm	Orangevale	916-5496259	art.jpbdesigns@gmail.com
Probuilders	Giovanni Cortez	Orangevale	916 533 6760	Gio@SacProbuilders.com



**Center Joint Unified School District  
CJUSD Central Freezer Facility @ M&O Yard  
Project No. 24-09  
8408 Watt Avenue, Antelope, CA 95843**

**PRE-BID CONFERENCE AGENDA**

**Date:** April 24, 2024      **Time:** 10:00 AM  
**Project:** CJUSD Central Freezer Facility Project, No. 24-09  
**Bid Date:** Thursday, May 2, 2024, 2:00:00 PM  
**Location for**  
**Receipt of Bid:** Center Joint Unified School Facilities Office located at 8408 Watt Ave,  
Antelope, CA 95843

- I. Meeting Called to Order**
- II. Introduction of Project Team members:**
  - A. District Representative(s) – Richard Putnam, Director of Facilities, Center Joint Unified School District & Angela Espinoza, Administrative Secretary – MOT Department
  - B. Architect – Brian Maytum, Principal, Nacht & Lewis
  - C. Owner's Representative – Mark Rosson & Terra Carlson Capital Program Management, Inc.
- III. Bidding Documents:** Available on the District Website @ <https://www.centerusd.org/About-Us/General-information/Request-For-Proposal/index.html>
- IV. Contracting Format:** Prime Contract
- V. Scope of Work Description:** Refer to technical specifications and drawings. Freezer equipment will be Owner Furnished Owner Installed (OFOI).
- VI. Engineers Estimate:** \$300,000
- VII. Bidding and Contract Award Requirements:**
  - A. License requirement: B
  - B. Pre-Qualification of Bidders: Prequalification not required.
  - C. Bid Bond or Certified Check – Required
  - D. Prevailing Wages – See Terms and Conditions of Contract for Labor and Materials, Section 6.1, Prevailing Wage Rates. Certified payrolls, payroll records and other documents shall be required along with your progress billings. [www.dir.ca.gov/dlsr/DPreWageDetermination.htm](http://www.dir.ca.gov/dlsr/DPreWageDetermination.htm).
  - E. DIR Registration of Contractor and Subcontractor: See Terms and Conditions of Contract for Labor and Materials, Section 6.3, DIR Registration.
  - F. Bond and Insurance Requirements: See Project Manual, General Conditions, Article 11
  - G. Bid Form:
    - 1. Completed Forms No exclusions
    - 2. No fax or phone bids
    - 3. Bids shall be valid for 90 days
- VIII. Project Schedule:** (128) Calendar Days, Work See Special Conditions in the Bidding and Contract Documents
- IX. Department of Justice (DOJ) Clearance, Badges and Security:** See Contractor Certification Regarding Background Checks in Bidding and Contract Documents.
- X. Site Information:**
  - A. Site access, temporary facilities, staging areas and parking
  - B. Working hours: This scope of work is to be performed during regular business hours from June 3<sup>rd</sup> thru October 11<sup>th</sup>.



**Center Joint Unified School District  
CJUSD Central Freezer Facility @ M&O Yard  
Project No. 24-09  
8408 Watt Avenue, Antelope, CA 95843**

**XI. Site Walk**

**XII. General Questions**

**XIII. Adjournment**

**Important note:** Responses to inquiries and discussions occurring at this pre-bid walk-through shall in no way change or modify the bid documents. The bid documents will be affected only by addenda issued prior to the bid date. We encourage all questions asked at the walk be followed up with an RFI.

**Send inquiries by 12:00pm on April 26, 2024, to:**  
Terra Carlson at [terra@capitalpm.com](mailto:terra@capitalpm.com)



ONE INCH = TWENTY FEET

ONE INCH = ONE FOOT

ONE-SIXTEENTH INCH = ONE FOOT

ONE-EIGHTH INCH = ONE FOOT

ONE-FOURTH INCH = ONE FOOT

ONE-HALF INCH = ONE FOOT

THREE-QUARTERS INCH = ONE FOOT

ONE INCH = ONE FOOT

ONE AND ONE-HALF INCH = ONE FOOT

# Center Joint Unified School District

# CENTRAL FREEZER

## SITE DEVELOPMENT PACKAGE

---

8408 Watt Avenue  
Antelope, CA 95843

### Center Joint Unified School District

CONSULTANT

---

**nacht&lewis**

600 Q Street, Suite 100  
Sacramento, CA 95811  
[www.nachtlewis.com](http://www.nachtlewis.com)  
916.329.4000

[illegible]

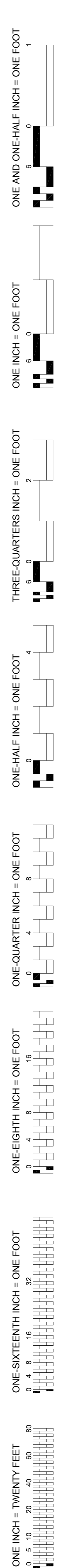
TITLE  
SHEET

---

SHEET NO.

T0





THESE DEMOLITION NOTES APPLY TO THIS SHEET ONLY.

- SEE SPECIFICATIONS FOR ADDITIONAL INFORMATION

- CONSULTANT

600 Q Street, Suite 100  
Sacramento, CA 95811  
www.nachtlewis.com  
916.329.4000



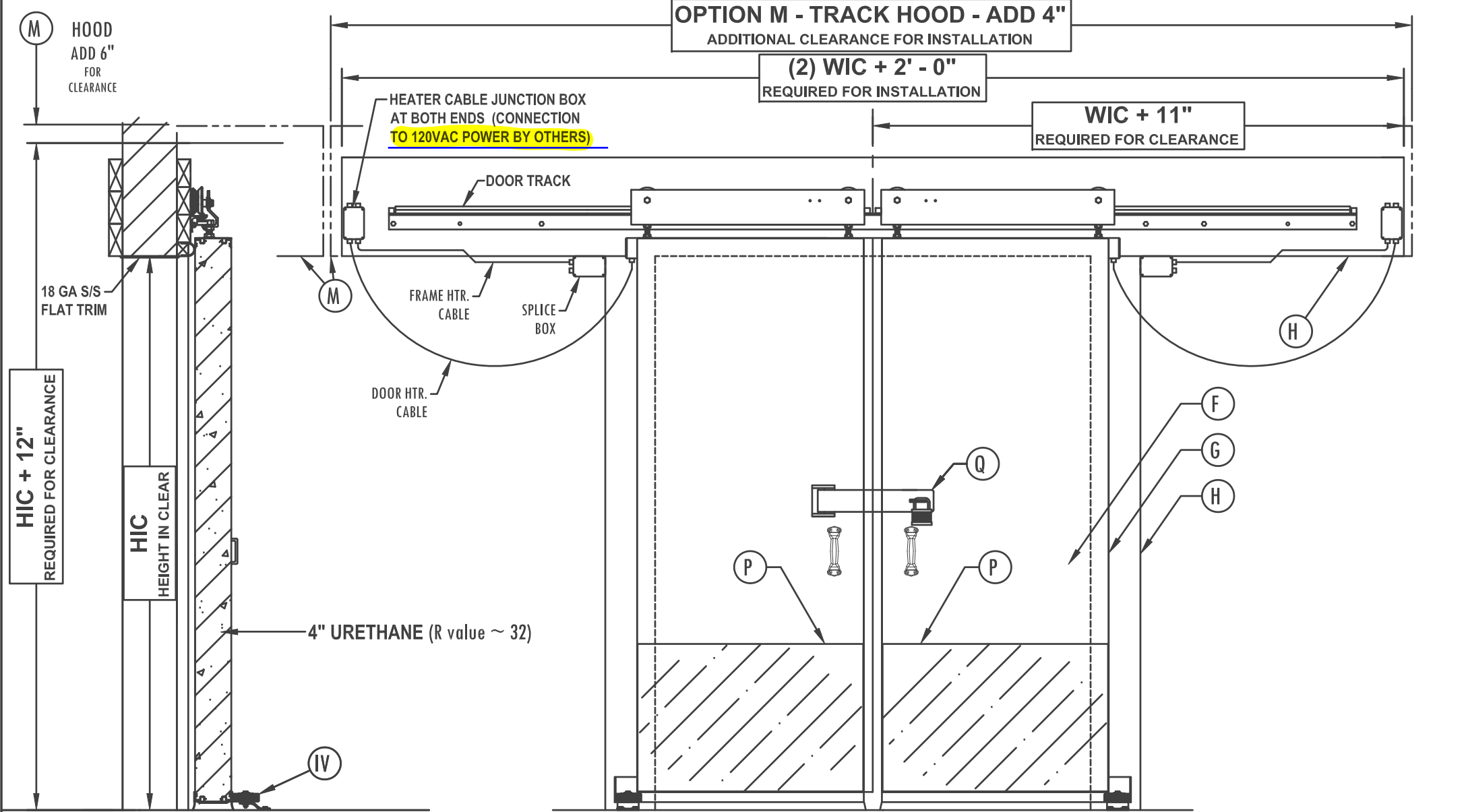
## A3

## ADDENDUM NO. 1 - 4/29/2024



SPECIFICATION NUMBER: 113

ClarkDoor



SECTION A - A

OPERATING TEMPERATURE		
DOOR	TRACKSIDE	WALLSIDE
A	AMBIENT	+35° F
B	+35° F	-10° F

**REQUIRED FOR PRODUCTION**

APPROVED: ☐ AS SUBMITTED (no changes required)  
☐ AS NOTED (make changes indicated)

DISPOSITION: ☐ RELEASE FOR FABRICATION  
☐ REVISE AND RESUBMIT

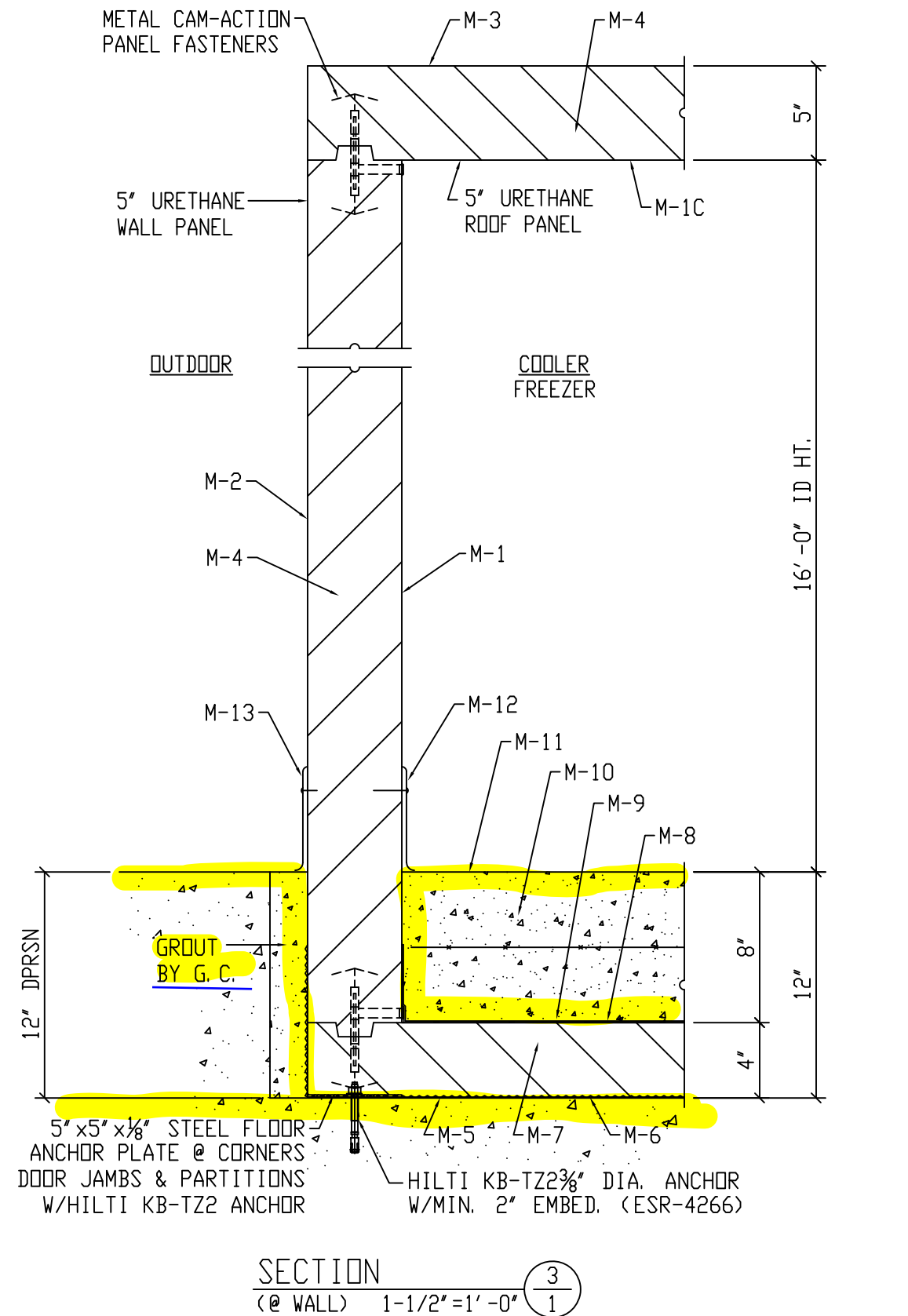
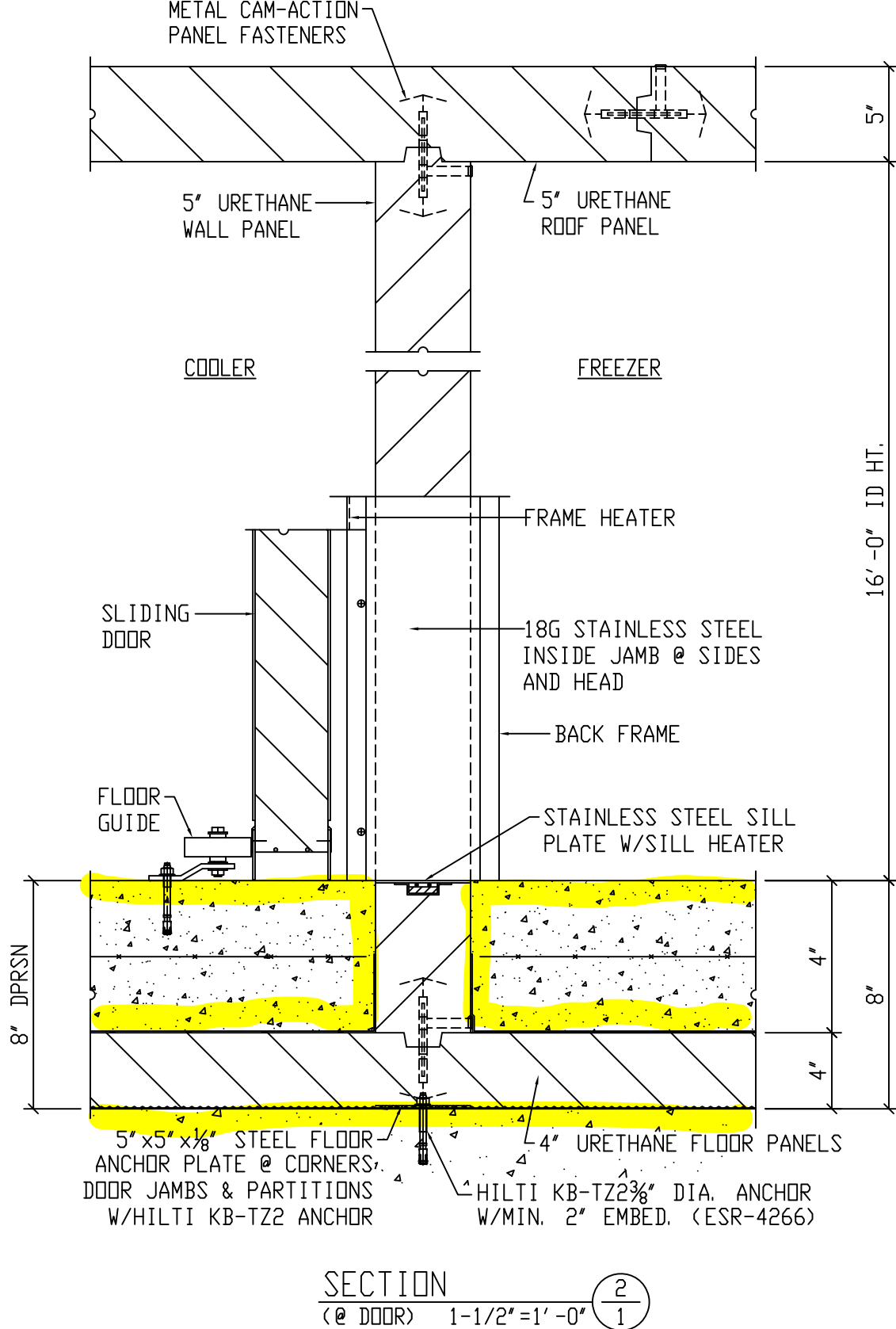
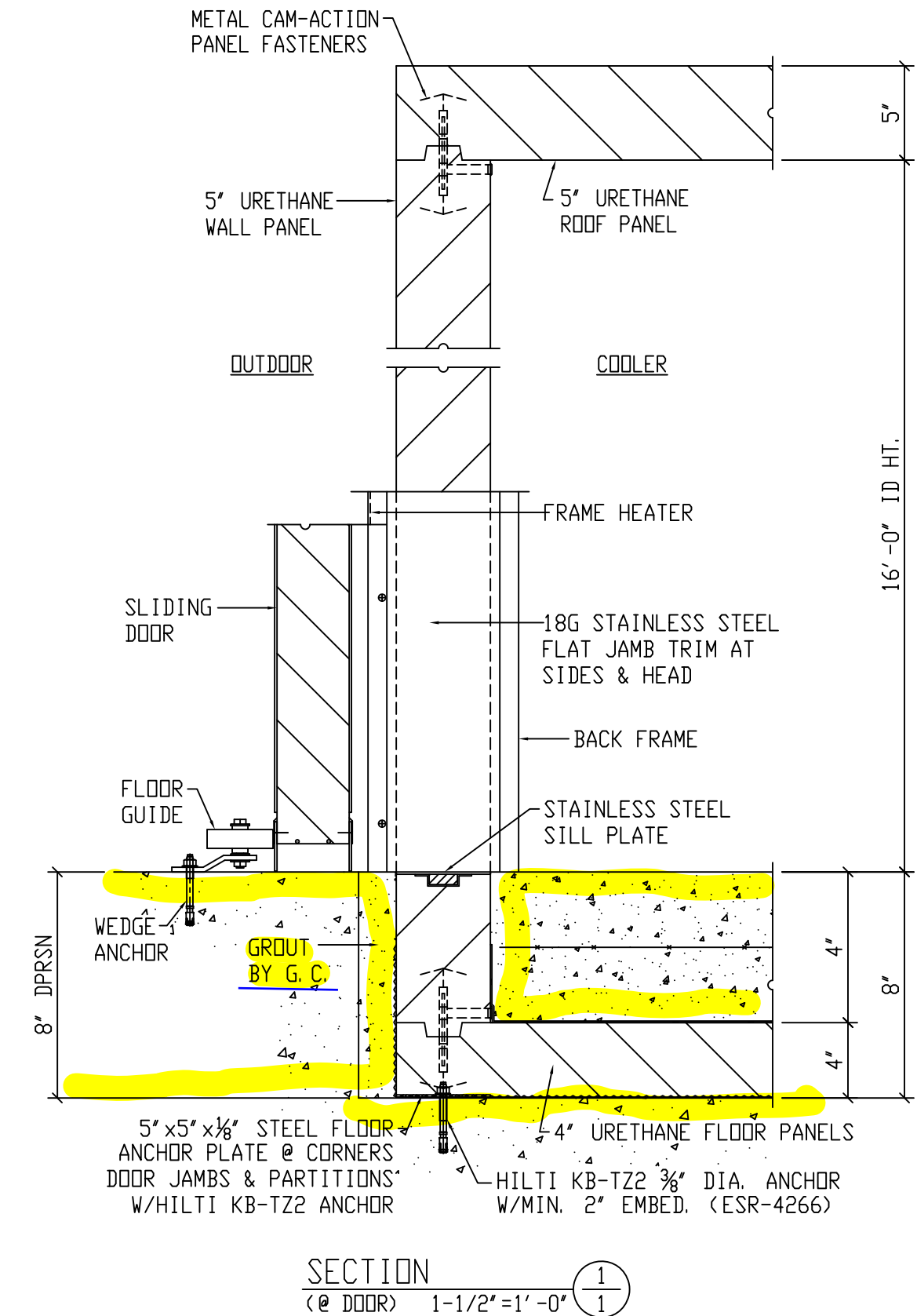
APPROVED BY: \_\_\_\_\_ DATE: \_\_\_\_\_

FOR: CENTER JOINT USD - ANTELOPE, CA				P.O. #:		DATE: 4/9/24		DRAWN BY:		APPROVED BY:	
CUSTOMER: CENTER JOINT UNION SCHOOL DISTRICT				W.O. #:		TAG:		CHECKED BY:		LAST REVISION: 12/23/2003	
DOOR #	QTY	W.I.C. MINOR IN CLEAR	H.I.C. HEIGHT IN CLEAR	DOOR TYPE	LOCK	JAMB		SERIAL NUMBER			
A	1	8'-0"	10'-0"	COOLER	TS	5"		TBD			
B	1	8'-0"	10'-0"	FREEZER	TS	5"		TBD			

DOUBLE HORIZONTAL SLIDE  
**COLD STORAGE DOOR**  
MANUAL 4" ALUMADOOR  
Model Number: **DHS-252032**

**5162**

- ### INSTALLATION REQUIREMENTS
- Floor under door must be level and smooth
  - Wall behind header and casings must be smooth in a common plane.
  - Mounting holes 3/4" diameter (drilled in field - by others).
  - Stayroller assemblies (stayrollers require two anchor bolts in floor) installed in field - by others.
- ### POWER OPERATED DOORS
- A. NOT USED
- B. NOT USED
- C. NOT USED
- D. NOT USED
- E. NOT USED
- ### DOOR PANEL AND FRAME
- F. DOOR PANEL
- ☒ 26 GA white stucco embossed galvanized steel
  - ☐ 20 GA stainless steel, type 304 #4
  - ☐ OTHER:
- G. Extruded aluminum interior frame.
- H. CASINGS AND HEADER - Steel Clad Wood
- ☐ Imperial white high density plastic
  - ☒ 26 GA white stucco embossed galvanized steel
  - ☐ 20 GA stainless steel, type 304 #4
  - ☐ OTHER:
- I. FASTENERS
- ☒ Through bolts (frame drilled in field - by others)
  - ☐ OTHER:
- ### OPTIONS
- J. ☐ ADDITIONAL HEATED SEALS (installed on panel)
- K. ☐ MANUFACTURED SEALS
- L. ☒ FREEZER DOOR (4" and 6" doors only)
- Heaters are standard equipment on all freezer doors - 110V connection required. Freezers are supplied with 1 standard and 1 heated pulldown. Heated pulldowns contain 10 watt heater cartridge - 110V connection required. (110V connections supplied in field - by others).
- M. ☒ HOOD ☐ Match Panel Steel ☐ OTHER:
- N. ☐ INSIDE JAMBS
- ☐ Imperial white high density plastic
  - ☐ 26 GA white stucco embossed galvanized steel
  - ☐ 18 GA stainless steel, type 304 #4
  - ☐ OTHER:
- O. ☒ MIRROR IMAGE BACKFRAME
- ☒ 26 GA white stucco embossed galvanized steel
  - ☐ 20 GA stainless steel, type 304 #4
  - ☐ OTHER:
- P. ☒ KICKPLATES ☒ Trackside ☐ Wallside
- Height: ☐ 18" ☐ 24" ☐ 36" ☐ 48" ☐ OTHER:
- ☐ Aluminum diamond tread (3/16" thick)
  - ☐ 18 GA 304 #4 stainless steel
  - ☐ OTHER:
- Q. ☒ LOCKING DEVICE - Hasp Type
- ☒ TRACKSIDE ☐ WALLSIDE
  - ☒ with emergency release
  - ☐ with NO EMERGENCY RELEASE
- R. ☐ ( ) VISION PANEL - 15" x 20" ☐ Insulated ☐ Heated



MATERIAL LIST CENTER JOINT USD		CUSTOMER: CENTER JOINT UNION SCHOOL DISTRICT PROJECT LOCATION ANTELOPE, CA	
SYM.	ITEM	DESCRIPTION	QTY.
PANEL MATERIAL LIST			
M-1	INTERIOR WALL FACING	26G STUCCO EMBOSSED WHITE GALVANIZED STEEL	
M-1C	INTERIOR CEILING FACING	26G STUCCO EMBOSSED WHITE GALVANIZED STEEL	
M-2	EXTERIOR EXPOSED FACING	26G STUCCO EMBOSSED WHITE GALVANIZED STEEL	
M-3	EXTERIOR UNEXPOSED FACING	26G STUCCO EMBOSSED WHITE GALVANIZED STEEL	
M-4	PANEL INSULATION	5" URETHANE, CLASS 1 - UL LISTED	
FLOOR: FLOOR PANELS IN DEPRESSION			
M-5	SUBFLOOR MEMBRANE	6MIL VISQUEEN VAPOR BARRIER W/LAPPED JOINTS	
M-6	BOTTOM FLOOR PANEL FACING	26 GA STUCCO EMBOSSED GALVANIZED STEEL	
M-7	FLOOR PANEL INSULATION	4" URETHANE, CLASS 1 - UL LISTED	
M-8	TOP FLOOR PANEL FACING	14 GA GALVANIZED STEEL, A525 G-90	
M-9	SLIP SHEET	15# FELT PAPER	
M-10	SUBSTRATE	REINFORCED CONCRETE SLAB BY G.C.	
M-11	FINISH FLOOR	REFER TO ARCHITECTURAL FINISH FLOOR	
M-12	INTERIOR BASE	6" HIGH SAME AS WALL FINISH COVED MOULDING	
M-13	EXTERIOR BASE	6" HIGH SAME AS WALL FINISH COVED MOULDING	
CLARK MANUAL BI-PARTING HORIZONTAL SLIDING DOORS: (8'-0" WIC x 10'-0" HIC) REFER TO CLARK DRAWING #5162 ON SHEET #1 FOR MATERIAL LIST & DETAILS			
ACCESSORY MATERIAL LIST			
A. 1.1	LIGHT CONTROL DETAIL	INTERIOR & EXTERIOR 3-WAY PRESSWITCH W/CLEAR WEATERPROOF COVER & PILOT LIGHT (120V, 20AMP)	2
A. 2.6	LIGHT FIXTURE	KASON #1820 HIGH BAY LED FIXTURE W/ALUM. HOUSING & POLYCARBONATE LENS (120V, 60W, 8100 LUMENS)	10
A. 9.1	HEATED VACUUM VENT @CLR	KASON #1827 2-WAY HEATED VENT (120V, 6W)	2
A. 9.2	HEATED VACUUM VENT @FZR.	KASON #1847 INTELLI-VENT HIGH-FLOW 2-WAY HEATED PRESSUR RELIEF PORT (120 VAC, 56 W)	1
A. 10.1	DIAL THERMOMETER	4-1/2" DIA. REMOTE VAPOR ACTUATED UNIT W/PROBE	2
A. 23.1	ROOF SUPPORT	STEEL I-BEAMS & COLUMNS W/PRIME GRAY FINISH	3
A. 24.1	OUTDOOR ROOF CAP	DUR-LAST ROOFING MEMBRANE OVER SLOPED INSULATION. CENTER CHANNEL, 6MIL POLYETHYLENE VAPOR BARRIER, TERMINATION BARS, FASTENERS & SEALANT	1
A. 24.2	RAIN HOOD @CLR	9'-0" WIDE 18 GA STAINLESS STEEL DOOR OPENING CANDPY WITH FASTENERS	1
GENERAL NOTES			
1. TO MAINTAIN NSF CERTIFICATION, A NSF CERTIFIED COVE BASE MUST BE INSTALLED.			
2. ALL DIMENSIONS MUST BE FIELD VERIFIED PRIOR TO FABRICATION OF COLD STORAGE ROOMS.			
3. WIRING & INSTALLATION OF FIXTURES AND POWER CONNECTIONS BY JOBSITE ELECTRICIAN.			
VERIFIED BY: _____ DATE: _____			

SCOPE OF WORK TO BE PROVIDED BY SITE DEVELOPMENT CONTRACTOR

APPROVAL NO. LA111-01-110  
CLASS 1 - INSULATED PANEL

USTC® NSF® U®

CITY OF LOS ANGELES CALIFORNIA RESEARCH REPORT: RR25133

STATE OF OREGON #137PFC

EISA COMPLIANT

**Rmu** AIRDYNE

DOOR WALK-IN COOLER/FREEZER COMBO FOR:  
CENTER JOINT USD  
PROJECT LOCATION: ANTELOPE, CA  
CUSTOMER: CENTER JOINT UNION SCHOOL DISTRICT

Refrigerator Manufacturers, LLC

17018 EDWARDS ROAD  
CERRITOS, CA 90703  
(562) 926-2006

DRAWING NO. 23166

DRAWN: J.L. DATE: 4/9/24

CHECKED: SHEET 1 of 3

CHECKED: SCALE AS NOTED

APPROVED: W.O. #

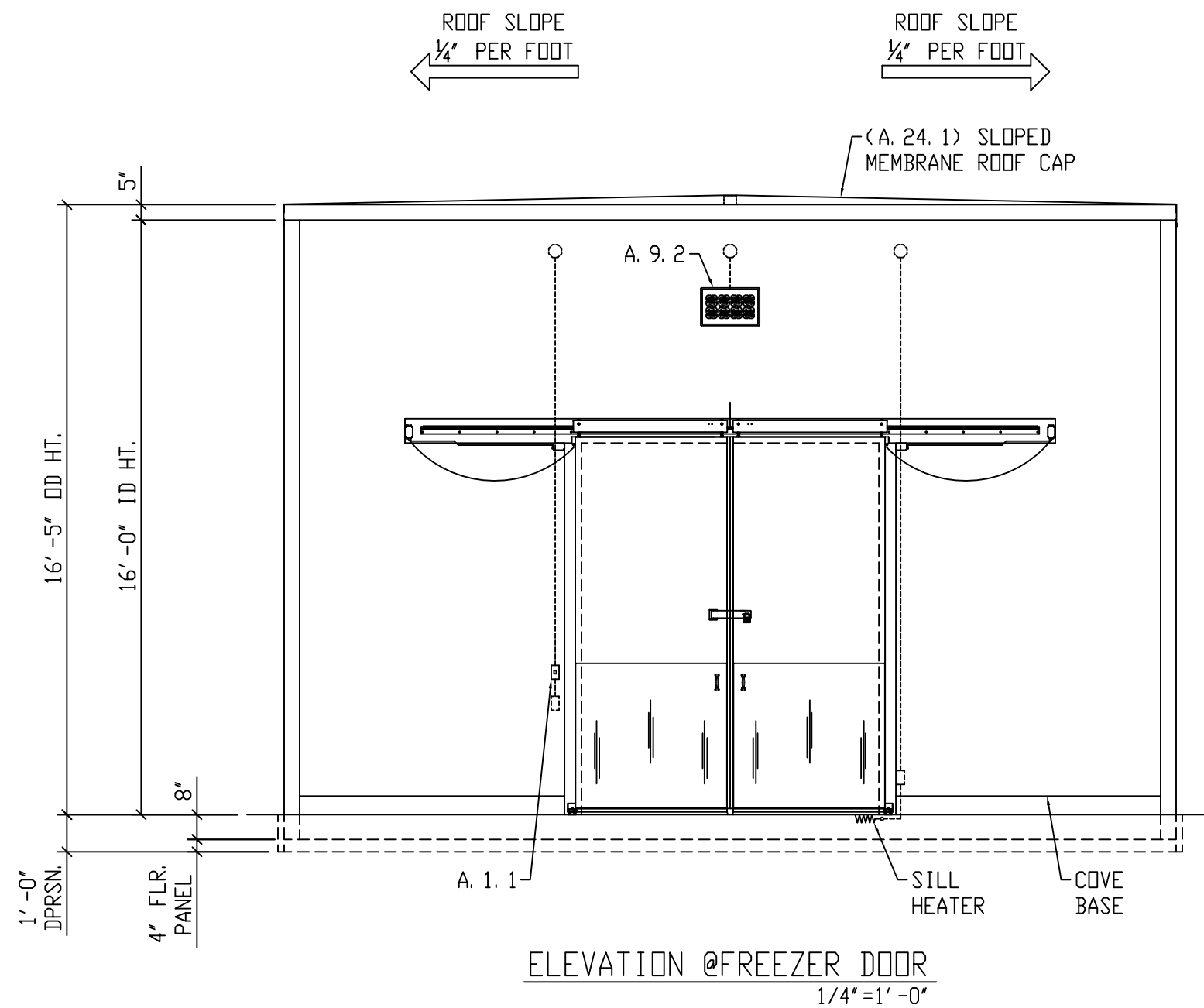
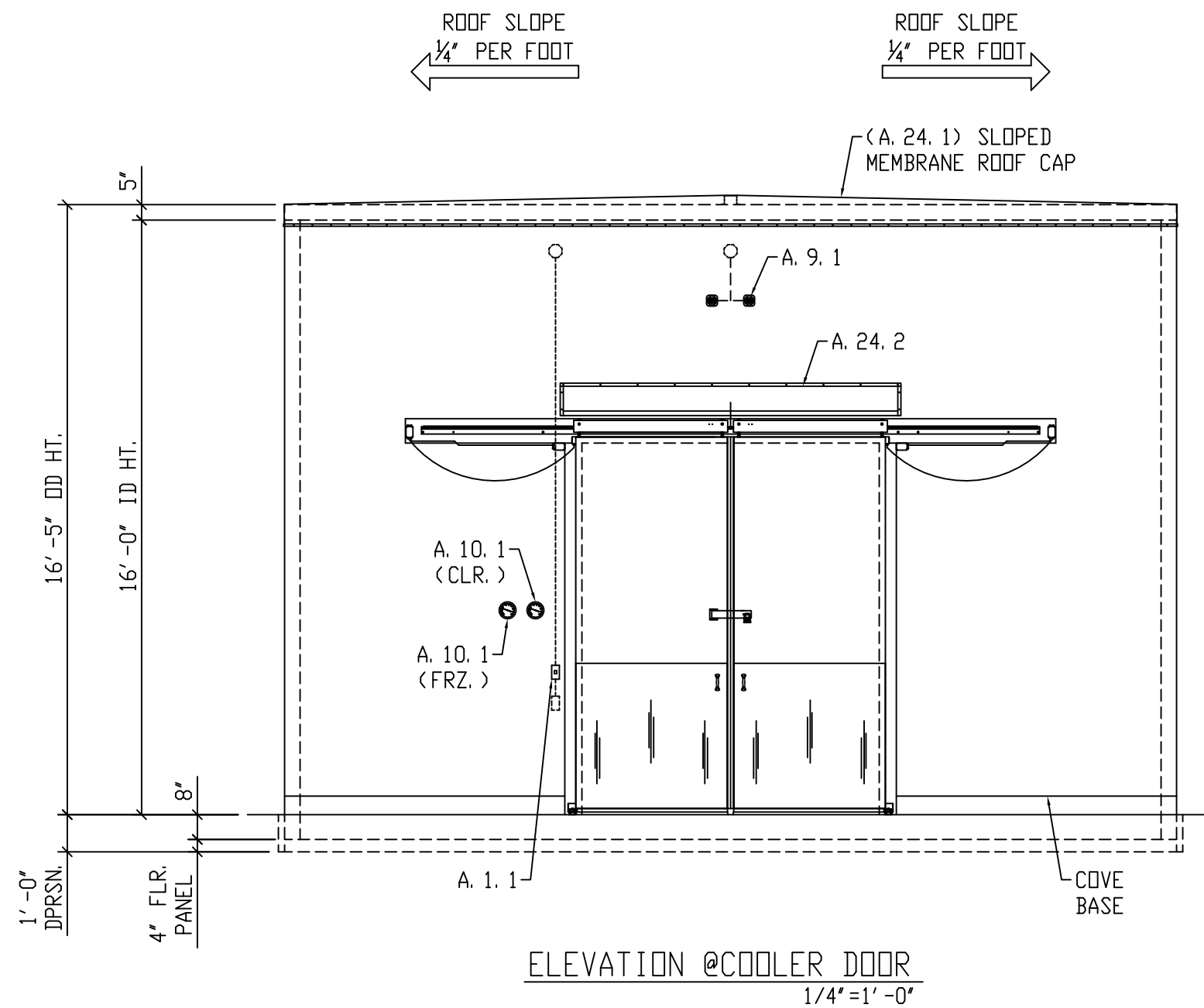
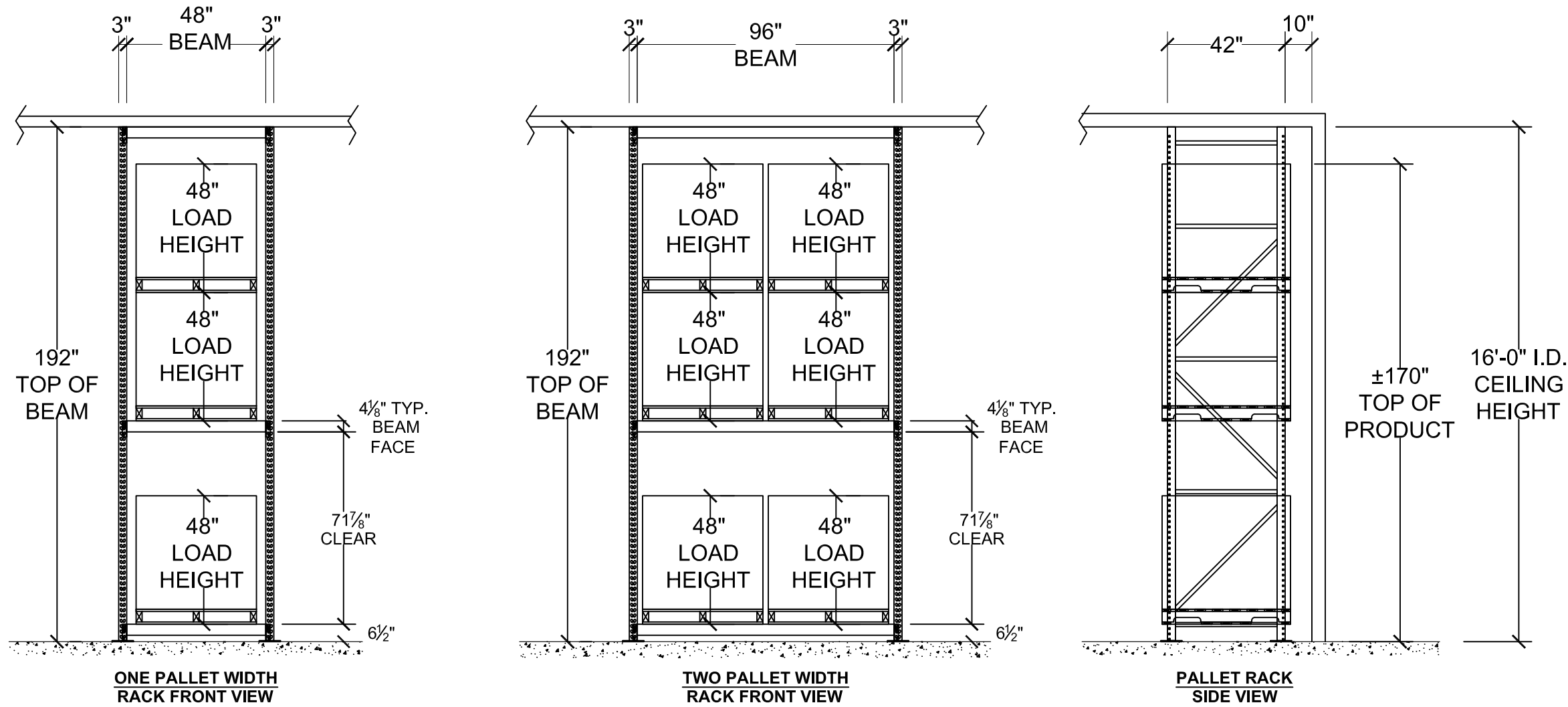
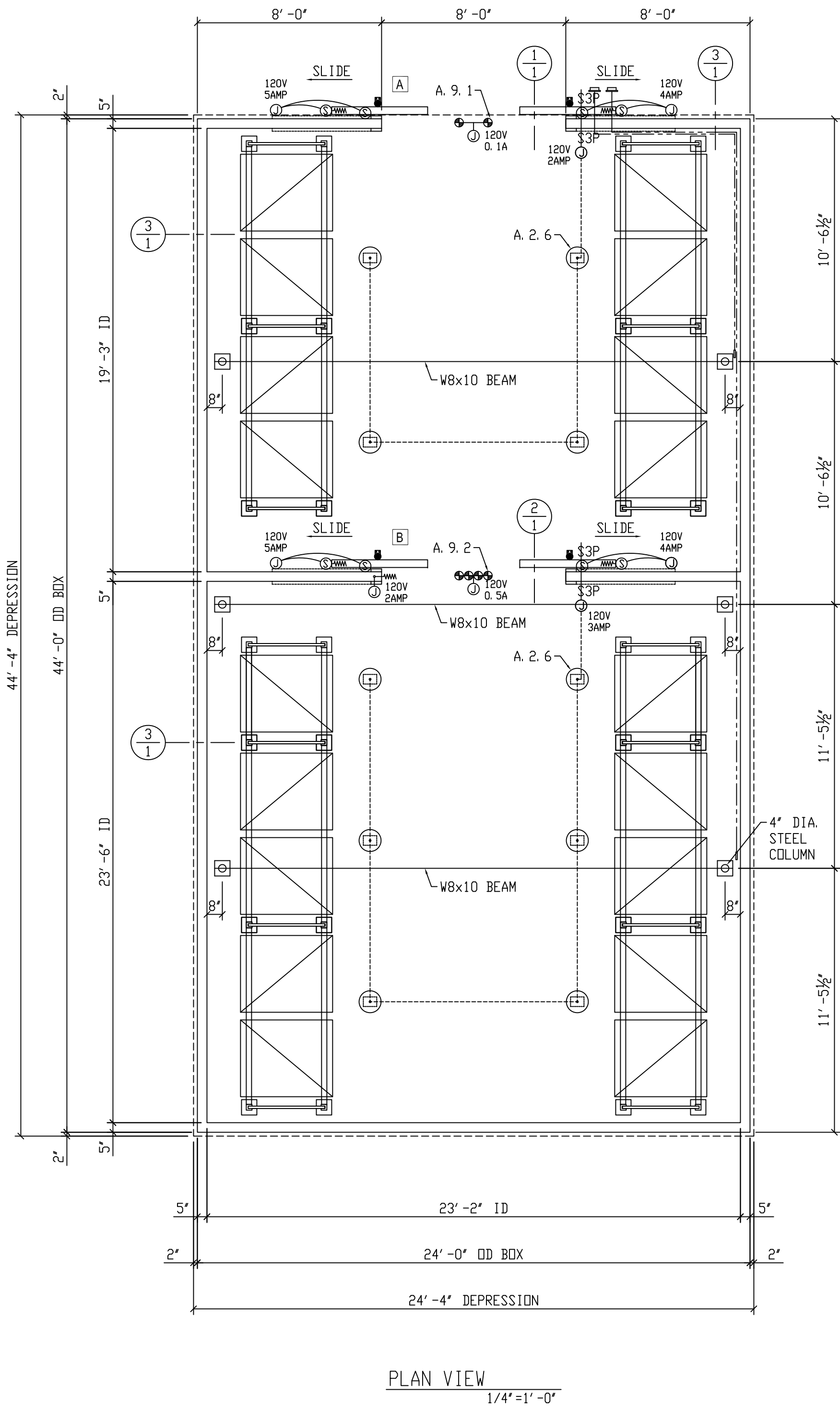
REV: REV.

REV: REV.

**SHEET X1**

**ADDENDUM NO. 1** 4/29/2024





MATERIAL LIST CENTER JOINT USD		CUSTOMER: CENTER JOINT UNION SCHOOL DISTRICT PROJECT LOCATION: ANTELOPE, CA	
SYM.	ITEM	DESCRIPTION	QTY.
PANEL MATERIAL LIST			
M-1	INTERIOR WALL FACING	26G STUCCO EMBOSSED WHITE GALVANIZED STEEL	
M-1C	INTERIOR CEILING FACING	26G STUCCO EMBOSSED WHITE GALVANIZED STEEL	
M-2	EXTERIOR EXPOSED FACING	26G STUCCO EMBOSSED WHITE GALVANIZED STEEL	
M-3	EXTERIOR UNEXPOSED FACING	26G STUCCO EMBOSSED WHITE GALVANIZED STEEL	
M-4	PANEL INSULATION	26G STUCCO EMBOSSED WHITE GALVANIZED STEEL	
FLOOR: FLOOR PANELS IN DEPRESSION			
M-5	SUBFLOOR MEMBRANE	6MIL VISQUEEN VAPOR BARRIER W/LAPPED JOINTS	
M-6	BOTTOM FLOOR PANEL FACING	26 GA STUCCO EMBOSSED GALVANIZED STEEL	
M-7	FLOOR PANEL INSULATION	4" URETHANE, CLASS 1 - UL LISTED	
M-8	TOP FLOOR PANEL FACING	14 GA GALVANIZED STEEL, A525 G-90	
M-9	SLIP SHEET	15# FELT PAPER	
M-10	SUBSTRATE	REINFORCED CONCRETE SLAB BY G. C.	
M-11	FINISH FLOOR	REFER TO ARCHITECTURAL FINISH FLOOR	
M-12	INTERIOR BASE	6" HIGH SAME AS WALL FINISH COVED MOULDING	
M-13	EXTERIOR BASE	6" HIGH SAME AS WALL FINISH COVED MOULDING	
CLARK MANUAL BI-PARTING HORIZONTAL SLIDING DOORS: (8'-0" WIC x 10'-0" HIC) REFER TO CLARK DRAWING #5162 ON SHEET #1 FOR MATERIAL LIST & DETAILS			
ACCESSORY MATERIAL LIST			
A. 1.1	LIGHT CONTROL DETAIL	INTERIOR & EXTERIOR 3-WAY PRESSWITCH W/CLEAR WATERPROOF COVER & PILOT LIGHT (120V, 20AMP)	2
A. 2.6	LIGHT FIXTURE	KASON #1820 HIGH BAY LED FIXTURE W/ALUM. HOUSING & POLYCARBONATE LENS (120V, 60W, 8100 LUMENS)	10
A. 9.1	HEATED VACUUM VENT @CLR	KASON #1827 2-WAY HEATED VENT (120V, 6W)	2
A. 9.2	HEATED VACUUM VENT @FZR	KASON #1847 INTELLI-VENT HIGH-FLOW 2-WAY HEATED PRESSUR RELIEF PORT (120 VAC, 56 W)	1
A. 10.1	DIAL THERMOMETER	4-1/2" DIA. REMOTE VAPOR ACTUATED UNIT W/PROBE	2
A. 23.1	ROOF SUPPORT	STEEL I-BEAMS & COLUMNS W/PRIME GRAY FINISH	3
A. 24.1	OUTDOOR ROOF CAP	DUR-LAST ROOFING MEMBRANE OVER SLOPED INSULATION, CENTER CHANNEL, 6MIL POLYETHYLENE VAPOR BARRIER, TERMINATION BARS, FASTENERS & SEALANT	1
A. 24.2	RAIN HOOD @CLR	9'-0" WIDE 18 GA STAINLESS STEEL DOOR OPENING CANDY WITH FASTENERS	1
GENERAL NOTES			
1. TO MAINTAIN NSF CERTIFICATION, A NSF CERTIFIED COVE BASE MUST BE INSTALLED.			
2. ALL DIMENSIONS MUST BE FIELD VERIFIED PRIOR TO FABRICATION OF COLD STORAGE ROOMS.			
3. WIRING & INSTALLATION OF FIXTURES AND POWER CONNECTIONS BY JOBSITE ELECTRICIAN.			
VERIFIED BY: _____ DATE: _____			



APPROVAL NO.  
LA111401-110  
CLASS 1 - INSULATED PANEL



CITY OF LOS ANGELES  
CALIFORNIA  
RESEARCH REPORT:  
RR25133

STATE OF OREGON  
#137PFC

EISA COMPLIANT

**Rmu** AIRDYNE

DRAWING NO.  
24166

OUTDOOR WALK-IN COOLER/FREEZER COMBO FOR:  
CENTER JOINT USD  
PROJECT LOCATION: ANTELOPE, CA  
CUSTOMER: CENTER JOINT UNION SCHOOL DISTRICT

Refrigerator Manufacturers, LLC

17018 EDWARDS ROAD  
CERRITOS, CA 90703  
(562) 926-2006

DRAWN: J.L. DATE: 4/9/24

CHECKED: SHEET 2 of 3

CHECKED: SCALE AS NOTED

APPROVED: W.O. #

REV: REV.

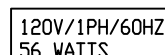
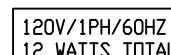
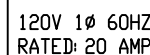
REV: REV.

REV: REV.

ADDENDUM NO. 1 - 4/29/2024

SHEET X2





CAM-ACTION FASTENER CHART	
PANEL TYPE	MAX. CENTER DISTANCE
WALL TO WALL	34-3/8" O. C.
WALL TO ROOF	23" O. C.
ROOF TO ROOF	34-3/8" O. C.
WALL TO FLOOR	23" O. C.
FLOOR TO FLOOR	23" O. C.

SHEET X3



DRAWING NO.  
24166

COLD STORAGE ROOM ACCESSORY DETAILS  
CENTER JOINT USD  
PROJECT LOCATION: ANTELOPE, CA  
CUSTOMER: CENTER JOINT UNION SCHOOL DISTRICT

Refrigerator Manufacturers, LLC

17018 EDWARDS ROAD  
CERRITOS, CA 90703  
(562) 926-2006

ADDENDUM NO. 1 - 4/29/2024



